

Summit Mine
 You'll know when you're there

Coords - LAT/LON WGS84
 N32°52.374', W108°58.141'

NMSP-West
 2374390, 0683170, 5541'MSL

Alternate Route - Bitter Creek Rd
 off Az75, ~mile marker 370

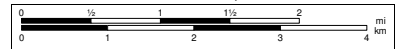
Carlisle Road (gravel, CMR)
 15.5 miles from pavement to mine
 stay on main road

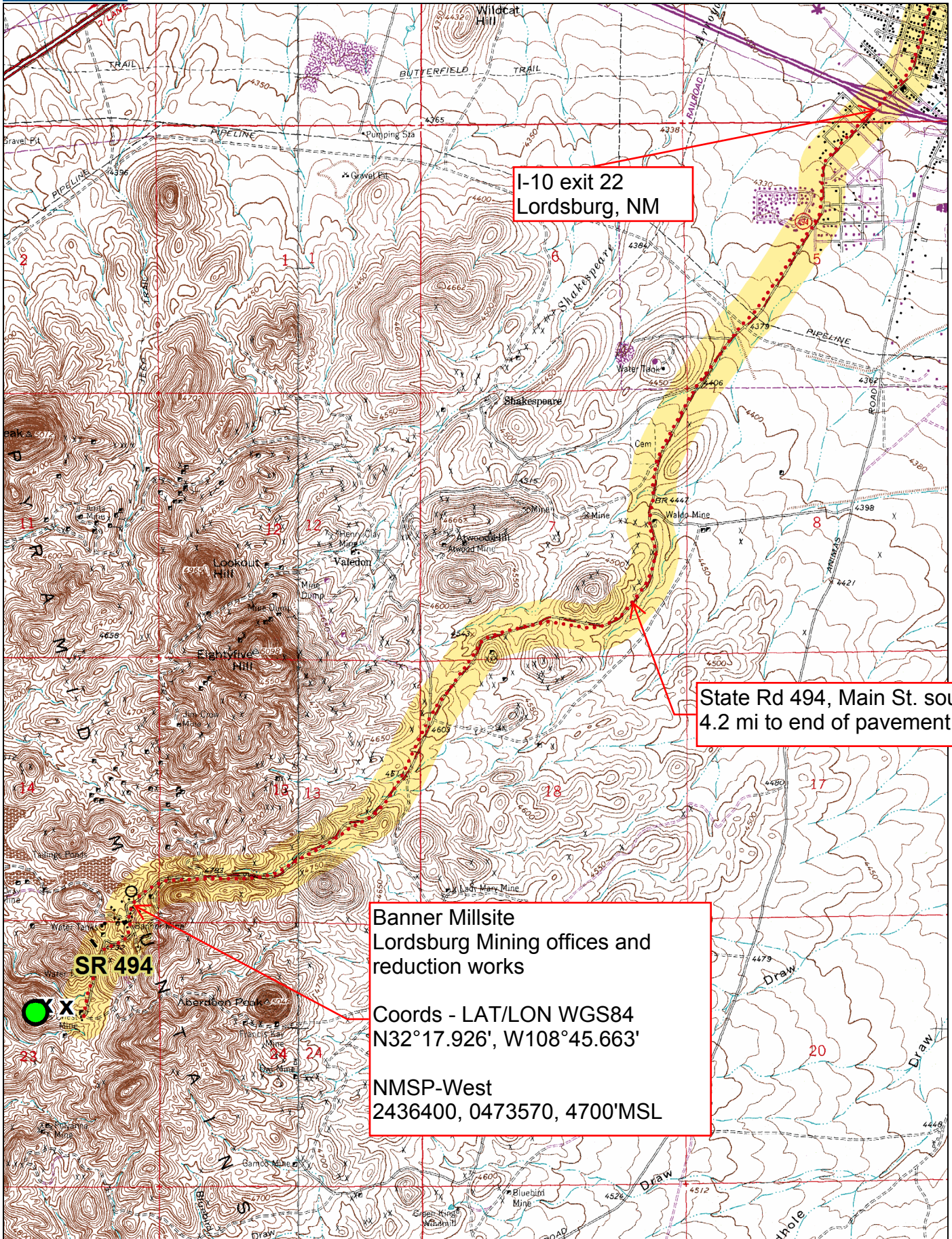
Az Hwy75
 mile marker 380
 1.2 miles E of the Gila River Xing in Duncan AZ

Coords - LAT/LON WGS84
 N32°44.068', W109°5.541'

NMSP-West
 2335930, 0633230, 3713'MSL

US Hwy70
 Duncan AZ





I-10 exit 22
Lordsburg, NM

State Rd 494, Main St. south
4.2 mi to end of pavement

Banner Millsite
Lordsburg Mining offices and
reduction works

Coords - LAT/LON WGS84
N32°17.926', W108°45.663'

NMSP-West
2436400, 0473570, 4700'MSL

